

ABOUT THIS MAP
Winyah Bay Watershed Land Cover 2001

Citation

Originator: North Inlet-Winyah Bay National Estuarine Research Reserve
Baruch Marine field Laboratory
University of South Carolina
P.O. Box 1630
Georgetown, SC 29442
Publication Date: April 2009

Description

Abstract: Land cover data and the watershed boundary were provided by the NOAA Coastal Services Center. The Coastal Change Analysis Program (C-CAP) is a nationally standardized database of land cover and land change information, developed using remotely sensed imagery, for the coastal regions of the U.S. Descriptions of the land cover classes used for C-CAP land cover mapping projects can be found at: http://www.csc.noaa.gov/crs/lca/tech_cls.html

Purpose: This map shows the major land cover types within the watershed area of Winyah Bay.

Time Period

Date and time: April 2009 (publication date)

Status of the Data

Progress: Complete
Maintenance & update frequency: As needed

Spatial Domain]

Bounding Coordinates
Top: 1,491,040.3589 m
Bottom: 1,251,028.5128 m
Left: 1,392,369.8867 m
Right: 1,639,212.0129 m

Keywords

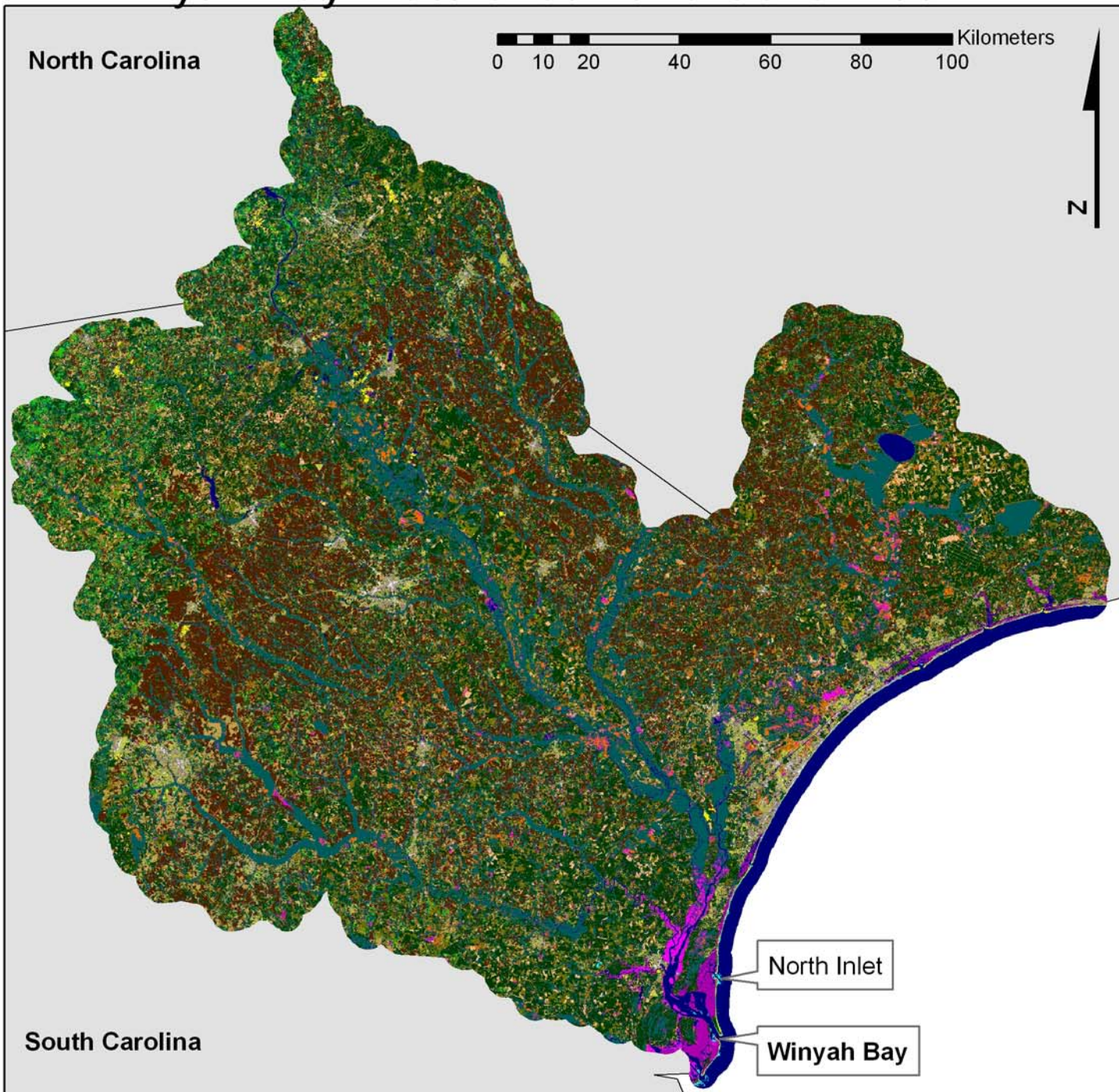
Winyah Bay, watershed, land cover, C-CAP, North Inlet

Data Storage and Access Information

File Name: Winyah Landcover.jpg
File Size: 4.67 MB
Dimensions: 2550 X 3300
Location of data: this data can be accessed through the web site www.northinlet.sc.edu
Access constraints: None

Use constraints: The developer/provider of this data; North Inlet-Winyah Bay National Estuarine Research Reserve, assumes no responsibility and cannot be held liable for any end use of this data.

Winyah Bay Watershed Land Cover 2001*



*Land cover data provided by NOAA Coastal Services Center

