

ABOUT THIS MAP

North Inlet-Winyah Bay National Estuarine Research Reserve Boundaries

Citation

Originator: North Inlet-Winyah Bay National Estuarine Research Reserve
Baruch Marine field Laboratory
University of South Carolina
P.O. Box 1630
Georgetown, SC 29442

Publication Date: January 2011

Description

Abstract: The base images for this map are 2006 color infrared (CIR) digital orthophoto quadrangles (DOQ) with a 1 m ground resolution. This imagery was provided by the South Carolina Department of Natural Resources.

This image shows the core and buffer boundaries for the North Inlet-Winyah Bay National Estuarine Research Reserve. The Reserve core and buffer boundaries have not changed since designation in 1992. The core area of the Reserve is defined by NERRS regulations (15 C.F.R. Sec. 921.11(c)(3)) as containing “ecological units of a natural estuarine system which preserve, for research purposes, a full range of significant physical, chemical and biological factors contributing to the diversity of fauna, flora and natural processes occurring within the estuary.” The core of the Reserve includes the majority of North Inlet and the Mud Bay portion of Winyah Bay, which are the focus of research and resource protection efforts. The delineation of the boundary is described in the original management plan for the Reserve. The type and resolution of the base map used in the original boundary delineation is unknown.

The buffer boundary is the area defined by NOAA regulations as an “area adjacent to or surrounding the core and on which the integrity of the core depends. This area protects the core and provides additional protection for estuarine dependent species.” Presently, most of the Reserve’s buffer is located between the core area of wetlands and the upland forested ecosystem that is the ecotone region of transitional vegetation between the dominant marsh grasses and the forest. This zone is roughly 50 meters wide in most places. It includes portions of Debidue Island and marshlands immediately adjacent to the northern boundary line, and North Island, located south of North Inlet and west of Jones Creek. The buffer area also includes the waters of the Atlantic Ocean adjacent to the mouth of North Inlet and the waters of Winyah Bay north of the shipping channel. These waters are subject to state and Federal environmental protection laws and regulations. Aquatic areas within the Reserve can be reached by boat via tidal waters which are part of the public domain. The uplands associated with the Kimbel Living and Learning Center and the Hobcaw Barony Discovery Center at the entrance to Hobcaw Barony are also within the Reserve buffer.

Purpose: This image shows core and buffer boundaries designated for the North Inlet-Winyah Bay National Estuarine Research Reserve.

Time Period

Date and time: January 2011 (publication date)

Status of the Data

Progress: Complete

Maintenance & update frequency: As needed

Spatial Domain

Bounding Coordinates

Top: 3,700,354.3487 m

Bottom: 3,680,106.8105 m

Left: 656,750.3587 m

Right: 672,176.2697 m

Keywords

NI-WB NERR, North Inlet

Data Storage and Access Information

File Name: basic_reserve_boundaries.jpg

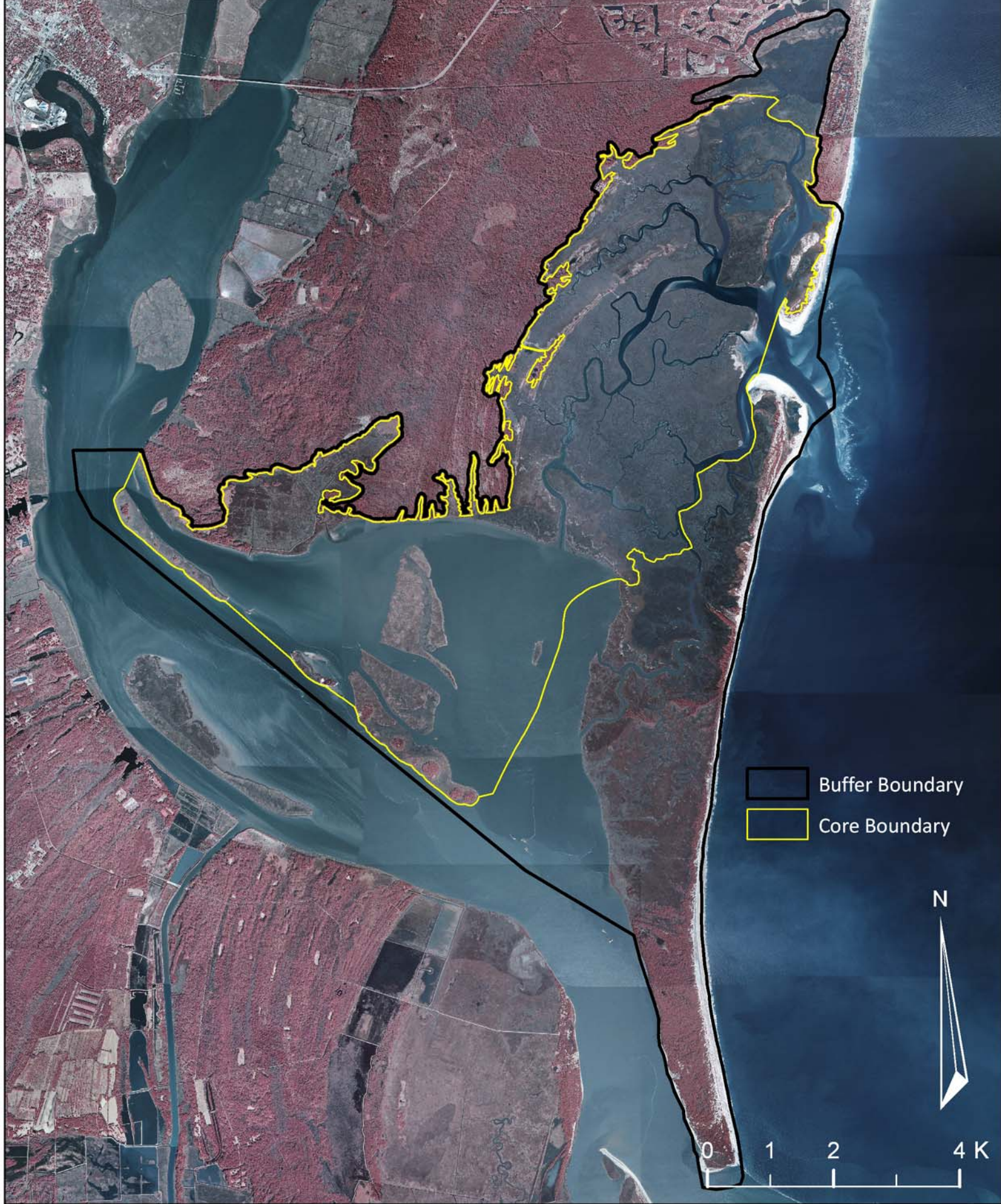
File Size: 2.21 MB

Dimensions: 2550 X 3300

Location of data: this data can be accessed through the web site www.northinlet.sc.edu

Access constraints: None

Use constraints: The developer/provider of this data; North Inlet-Winyah Bay National Estuarine Research Reserve, assumes no responsibility and cannot be held liable for any end use of this data.



North Inlet-Winyah Bay National Estuarine Research Reserve Boundaries

