

ABOUT THIS MAP
CIR Aerial of Winyah Bay and Surrounding Area

Citation

Originator: North Inlet-Winyah Bay National Estuarine Research Reserve
Baruch Marine field Laboratory
University of South Carolina
P.O. Box 1630
Georgetown, SC 29442
Publication Date: April 2009

Description

Abstract: The base images for this map are color infrared (CIR) digital orthophoto quadrangles (DOQ) with a 1 m ground resolution. This imagery was provided by the South Carolina Department of Natural Resources.

Purpose: This image shows the landscape area in and adjacent to Winyah Bay.

Time Period

Date and time: April 2009 (publication date)

Status of the Data

Progress: Complete
Maintenance & update frequency: As needed

Spatial Domain

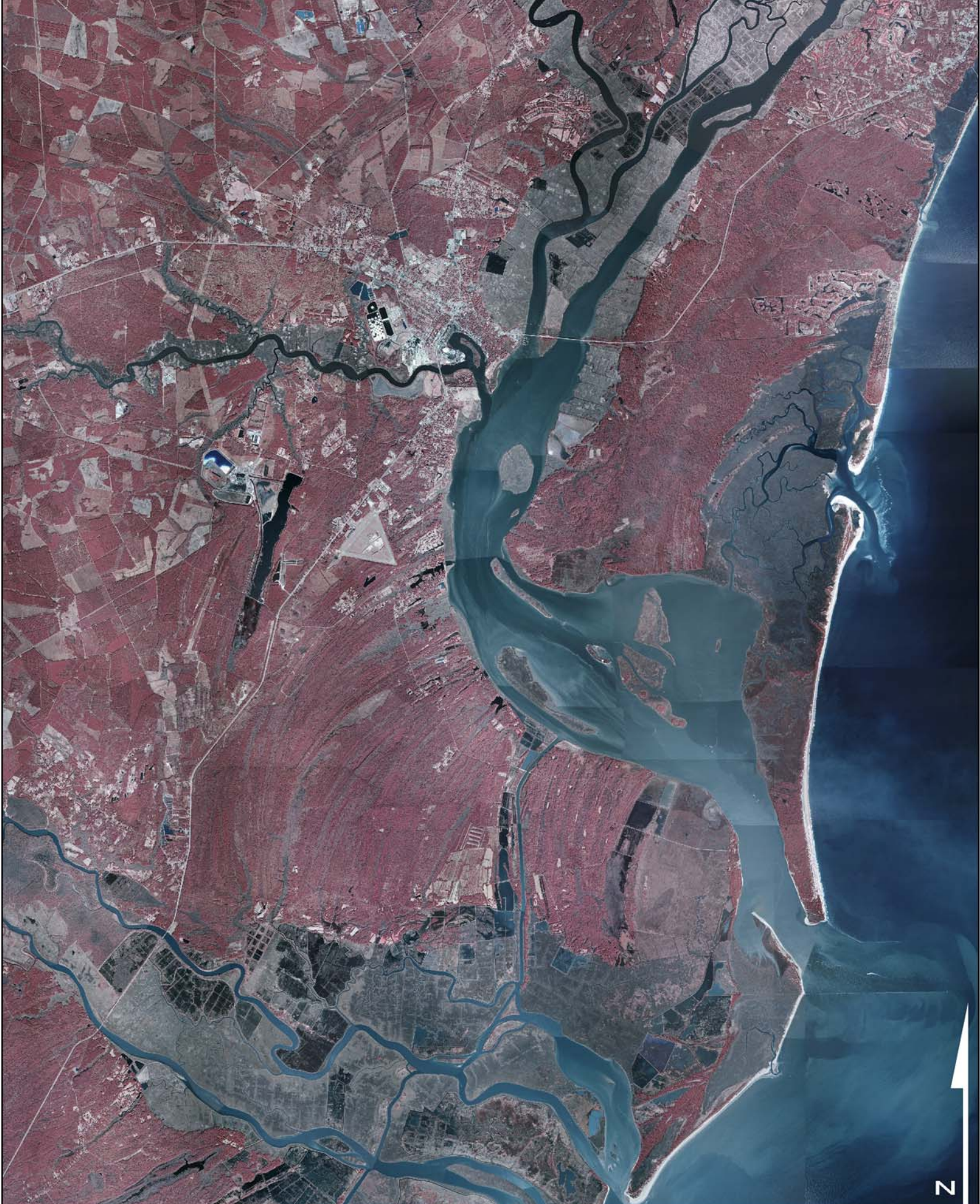
Bounding Coordinates
Top: 3,703,317.2260 m
Bottom: 3,667,549.1663 m
Left: 645,790.7209 m
Right: 674,50638893 m

Keywords

NI-WB NERR, North Inlet

Data Storage and Access Information

File Name: CIRWinyahBay.jpg
File Size: 9.11 MB
Dimensions: 2550 X 3300
Location of data: this data can be accessed through the web site www.northinlet.sc.edu
Access constraints: None
Use constraints: The developer/provider of this data; North Inlet-Winyah Bay National Estuarine Research Reserve, assumes no responsibility and cannot be held liable for any end use of this data.



N

0 2.5 5 10 Kilometers